

# American Psychiatric Association Resident-Fellow Handbook

*A Guide to Resident-Fellow Opportunities*



## Message from the APA CEO and Medical Director

Dear Resident-Fellow Member,

Welcome to the American Psychiatric Association (APA). The APA is the world's largest professional association of psychiatrists and it is our mission to support our members and the patients they serve.

You are entering a career in medicine at one of the most exciting times in the history of both medicine and psychiatry. With our nation's focus on access to health care as well as ensuring support for mental health and substance abuse services, there is a great demand for highly trained and dedicated psychiatrists. In addition, we continue to achieve major scientific breakthroughs in the understanding of the brain that will revolutionize the treatments for individuals with mental illness and substance use disorders.

The APA is here to be a resource and partner as you move into the field of psychiatry. Whether it is through important fellowships, prestigious awards or participation in the governance of the APA, the APA offers you ample opportunity to expand the scope of your experience and make a difference in the lives of your patients. In addition, the APA will keep you abreast of the latest research, prepare you to lead in a quickly changing health care environment, advocate for the interests of our patients and the profession on Capitol Hill, and offer opportunities to connect with and learn from well-respected colleagues in the areas of research, academics, and clinical practice.

This guide will get you started by providing you with a high level overview of the APA. It is my hope that you join the APA and experience the peer support, intellectual stimulation, camaraderie and, above all, the sense of family that you get by belonging to this noble profession.

Sincerely,

A handwritten signature in black ink that reads "Saul Levin, MD, MPA". The signature is written in a cursive, flowing style.

Saul Levin, MD, MPA  
CEO & Medical Director  
American Psychiatric Association

# Contents

<b>Message from the APA CEO and Medical Director.....</b>	<b>1</b>
<b>Section 1: Leadership Opportunities .....</b>	<b>5</b>
A. APA Resident-Fellow Member Trustee (RFMT) and Trustee-Elect (RFMTE) .....	5
B. Assembly Committee of Residents and Fellows (ACORF).....	5
C. APA Delegate to the AMA-RFS .....	6
D. Resident Representative to the ACGME-RRC .....	6
<b>Section 2: Fellowships .....</b>	<b>7</b>
A. American Psychiatric Leadership Fellowship .....	7
B. Jeanne Spurlock, M.D. Congressional Fellowship .....	8
C. Public Psychiatry Fellowship .....	8
D. Child and Adolescent Psychiatry Fellowship .....	9
E. Minority Fellowships.....	10
1. APA/SAMHSA Fellowship.....	10
2. Diversity Leadership Fellowship.....	10
3. APA/SAMHSA Substance Abuse Fellowship .....	11
F. Research Fellowships .....	12
1. Psychiatric Research Fellowship .....	12
2. Resident Psychiatric Research Scholars .....	12
3. Schizophrenia Research Fellowship .....	13
<b>Section 3: Awards and Competitions.....</b>	<b>14</b>
A. Resident Recognition Award.....	14
B. Resident Research Award.....	14
C. Research Colloquium for Junior Investigators .....	15
D. Kempf Fund Award for Research Development in Psychobiological Psychiatry .....	16
E. Resident Poster Competition .....	16
F. Mind Games National Residency Team Competition .....	16
<b>Section 4: Governance Structure of the APA.....</b>	<b>18</b>
<b>Section 5: Creating APA Policy.....</b>	<b>24</b>
<b>Section 6: Membership Value.....</b>	<b>26</b>

## Quick Reference Guide

<b>Leadership Opportunities</b>			
<b>Program</b>	<b>Eligibility</b>	<b>Contact</b>	<b>Deadline</b>
<a href="#">RFMT / RFMTE</a>	<ul style="list-style-type: none"> <li>- APA Resident-Fellow Member</li> <li>- PGY-2 or PGY-3</li> </ul>	Chiharu Tobita <a href="mailto:ctobita@psych.org">ctobita@psych.org</a> 703-907-8527	September
<a href="#">ACORF</a>	<ul style="list-style-type: none"> <li>- APA Resident-Fellow Member</li> <li>- PGY-2 or PGY-3</li> </ul>	Jon Fanning <a href="mailto:jfanning@psych.org">jfanning@psych.org</a> 703-907-8656	Varies
<a href="#">AMA-RFS Delegate</a>	<ul style="list-style-type: none"> <li>- APA &amp; AMA Member</li> <li>- In training during 2-year term</li> </ul>	Becky Yowell <a href="mailto:byowell@psych.org">byowell@psych.org</a> 703-907-8593	Varies
<a href="#">ACGME-RRC Representative</a>	<ul style="list-style-type: none"> <li>- APA Resident-Fellow Member</li> <li>- In training during 2-year term</li> </ul>	Tristan Gorrindo, MD <a href="mailto:tgorrindo@psych.org">tgorrindo@psych.org</a> 703-907-8633	Varies
<b>Fellowships</b>			
<a href="#">American Psychiatric Leadership</a>	<ul style="list-style-type: none"> <li>- APA Resident-Fellow Member</li> <li>- PGY-2</li> <li>- One nominee per program</li> </ul>	Rosa Bracey <a href="mailto:apl@psych.org">apl@psych.org</a> 703-907-8539	December
<a href="#">Jeanne Spurlock M.D. Congressional</a>	<ul style="list-style-type: none"> <li>- APA Member</li> <li>- U.S. Citizen/Resident</li> </ul>	Marilyn King <a href="mailto:mking@psych.org">mking@psych.org</a> 703-907-8653	September
<a href="#">Public Psychiatry</a>	<ul style="list-style-type: none"> <li>- APA Resident-Fellow Member</li> <li>- PGY-2 or PGY-3</li> </ul>	Marilyn King <a href="mailto:mking@psych.org">mking@psych.org</a> 703-907-8653	December
<a href="#">Child &amp; Adolescent Fellowship</a>	<ul style="list-style-type: none"> <li>- APA Resident-Fellow Member</li> <li>- PGY-1 or PGY-3</li> </ul>	Alison Bondurant <a href="mailto:kids@psych.org">kids@psych.org</a> 703-907-8639	December
<b>Minority Fellowships</b>			
<a href="#">APA/SAMHSA</a>	<ul style="list-style-type: none"> <li>- APA Resident-Fellow Member</li> <li>- PGY-2</li> <li>- U.S. Citizen/Resident</li> </ul>	Marilyn King <a href="mailto:mking@psych.org">mking@psych.org</a> 703-907-8653	January
<a href="#">Diversity Leadership</a>	<ul style="list-style-type: none"> <li>- APA Resident-Fellow Member</li> <li>- PGY-2</li> </ul>	Marilyn King <a href="mailto:mking@psych.org">mking@psych.org</a> 703-907-8653	January
<a href="#">APA/SAMHSA Substance Abuse</a>	<ul style="list-style-type: none"> <li>- APA Resident-Fellow Member</li> <li>- PGY-5</li> <li>- U.S. Citizen/Resident</li> </ul>	Marilyn King <a href="mailto:mking@psych.org">mking@psych.org</a> 703-907-8653	January
<b>Research Fellowships</b>			
<a href="#">Psychiatric Research Fellowship</a>	<ul style="list-style-type: none"> <li>- APA Resident-Fellow Member</li> <li>- Not already an established investigator</li> </ul>	Alison Bondurant <a href="mailto:psychresearch@psych.org">psychresearch@psych.org</a> 703-907-8639	October
<a href="#">Resident Psychiatric Research Scholars</a>	<ul style="list-style-type: none"> <li>- APA Resident-Fellow Member</li> <li>- PGY-1, PGY-2, or PGY-3</li> </ul>	Rosa Bracey <a href="mailto:scholars@psych.org">scholars@psych.org</a> 703-907-8639	January
<a href="#">Schizophrenia Research</a>	<ul style="list-style-type: none"> <li>- APA Resident-Fellow Member</li> <li>- Not already an established investigator</li> </ul>	Marilyn King <a href="mailto:schizophrenia@psych.org">schizophrenia@psych.org</a> 703-907-8653	N/A
<b>Awards &amp; Competitions</b>			
<a href="#">Resident Recognition Award</a>	<ul style="list-style-type: none"> <li>- APA Resident-Fellow Member</li> <li>- One nominee per program</li> </ul>	Claire Van Wagner <a href="mailto:cvanwagner@psych.org">cvanwagner@psych.org</a> 703-907-8635	February

<b>Research Awards</b>			
<a href="#">Resident Research Award</a>	- APA membership is not required	Alison Bondurant <a href="mailto:residentresearch@psych.org">residentresearch@psych.org</a> 703-907-8639	December
<a href="#">Research Colloquium for Junior Investigators</a>	- APA Resident-Fellow Member - Senior psychiatric resident, fellow, junior faculty	Sejal Patel <a href="mailto:colloquium@psych.org">colloquium@psych.org</a> 703-907-8579	November
<a href="#">Kempf Fund Award for Research Development in Psychobiological Psychiatry</a>	- Completed training in U.S. or Canada	Marilyn King <a href="mailto:kempf@psych.org">kempf@psych.org</a> 703-907-8653	October
<b>Resident Competitions</b>			
<a href="#">Resident Poster Competition</a>	- Psychiatry resident or fellow during poster presentation	Anarda Weaver <a href="mailto:aweaver@psych.org">aweaver@psych.org</a> 703-907-8635	December
<a href="#">Mind Games</a>	- APA Resident-Fellow Member - Must be part of a team	Nancy Archey <a href="mailto:narchey@psych.org">narchey@psych.org</a> 703-907-8635	February
<b>Networking</b>			
	<p><b>Twitter:</b> The APA and APF use the microblogging service to stay connected on emerging developments and news.            APA: <a href="https://twitter.com/APAPsychiatric">twitter.com/APAPsychiatric</a>            APA CEO/Medical Director: <a href="https://twitter.com/DCdoctweets">twitter.com/DCdoctweets</a>            APF: <a href="https://twitter.com/PsychFoundation">twitter.com/PsychFoundation</a>            AJP Residents' Journal: <a href="https://twitter.com/AJP_ResJournal">twitter.com/AJP_ResJournal</a></p>		
	<p><b>Facebook:</b> The APA and APF Facebook pages serve as a social utility to connect people with each other on mental health issues.            APA: <a href="https://www.facebook.com/AmericanPsychiatricAssociation">www.facebook.com/AmericanPsychiatricAssociation</a>            APF: <a href="https://www.facebook.com/psychfoundation">www.facebook.com/psychfoundation</a></p>		
	<p><b>LinkedIn:</b> APA Members can build their professional identity and network by joining the LinkedIn group <i>American Psychiatric Association</i>.            APA: <a href="https://www.linkedin.com/groups?gid=72472">www.linkedin.com/groups?gid=72472</a></p>		

# Section 1: Leadership Opportunities

## A. APA Resident-Fellow Member Trustee (RFMT) and Trustee-Elect (RFMTE)

[www.psychiatry.org/learn/residents--fellows/leadership-opportunities](http://www.psychiatry.org/learn/residents--fellows/leadership-opportunities)

Each year, a RFMTE is elected nationally by the membership and serves on the APA Board of Trustees for one year without a vote. At the end of that year, the Trustee-Elect advances to Trustee and serves on the Board for one year with voting privileges. A new RFMTE is elected. The RFM Trustee is the only RFM on the Board with a vote, although the other RFMs contribute to Board discussions and work groups. These positions provide national leadership opportunities for RFMs. The Board is the governing body of the APA, and its primary function is to formulate and implement the policies of the APA. In these roles, they facilitate communication between the RFM groups and the Board. For more information, feel free to contact Chiharu Tobita at [ctobita@psych.org](mailto:ctobita@psych.org) or 703-907-8527.

### Eligibility:

Residents who are APA Resident-Fellow Member and in their PGY-2 or PGY-3 year the summer prior to the election in January of the following year are eligible. PGY-3 residents must remain in training through PGY- 5 so as to be in training through the term as Trustee (through May two years after the election) and must submit a signed statement of intent to do so prior to nomination. The residents elected as Trustee and Trustee-elect cannot, while serving, simultaneously belong to or hold a position in the Assembly Committee of Area Resident-Fellow Members, APA Public Psychiatry Fellowship, APA Minority Fellowship or APA Leadership Fellowships.

### Submission Requirements:

- Must be an APA Resident-Fellow Member
- [Disclosure of Interests and Affiliations Form](#)
- Curriculum Vitae (no more than two pages)
- One-page personal statement from the resident supporting his/her recommendation, including answers to:
  - o What would your particular skills and experience bring to the APA?
  - o What would you do to address the major issues facing psychiatry and/or the APA?
- Letter of recommendation (optimal)
- Completed RFM Trustee [Nomination Release Form](#)
- Contact and demographic information: Name, Mailing address, Daytime phone, Fax, Evening phone, Email, District Branch, and APA member number

## B. Assembly Committee of Residents and Fellows (ACORF)

[www.psychiatry.org/learn/residents--fellows/leadership-opportunities](http://www.psychiatry.org/learn/residents--fellows/leadership-opportunities)

The Assembly Committee of Area Resident-Fellow Member Representatives (ACORF) provides Assembly representation for members of the American Psychiatric Association who are enrolled in psychiatric residency and fellowship training programs. Committee members are elected by their Area Councils (seven in all), and serve two sequential one-year terms, the first as Area Resident-Fellow Member (RFM) Deputy Representative, and the second as Area RFM Representative. Area RFM Representatives are voting members of the Assembly while Deputy Representatives are not. ACORF members serve on Assembly committees, including the Rules committee, Reference committees, and the Assembly Executive Committee

### Responsibilities:

ACORF Representatives and Deputy Representatives serve as:

- A reference and referral group for the Assembly when seeking input on actions or proposed actions affecting RFMs
- A centralized coordinating group with other groups representing RFMs' interest in the APA
- A voice regarding issues before the Assembly and Area Councils

## C. APA Delegate to the AMA-RFS



The American Medical Association Resident and Fellows Section (AMA-RFS) was created by the AMA in 1974 to represent and advocate for resident and fellow physicians and to train young physician leaders. The APA has two resident-fellow positions in AMA-RFS, a *delegate* and an *alternate delegate*, who are part of a greater APA delegation at AMA meetings. Nominations for the delegate positions are accepted every year as terms of current representatives expire. Resident nominees must be both APA and AMA members and be in residency/fellowship training during the duration of the two-year appointment term. For more information on the APA delegate position for the AMA-RFS, feel free to contact Becky Yowell, Assistant Director, Healthcare Systems and Financing at [byowell@psych.org](mailto:byowell@psych.org). To obtain more information on the AMA-RFS, including current highlights, AMA member benefits and other AMA leadership opportunities, please visit the AMA-RFS [website](#).

### Delegate Responsibilities:

- Represent APA professional standards
- Attend two AMA-RFS meetings a year\*
- Submit resolutions at AMA-RFS meetings in accordance with APA mission statement
- Report relevant information from AMA-RFS meetings to APA Resident-Fellow Members

*\*AMA-RFS meetings occur in June and November and travel expenses are covered by APA*

## D. Resident Representative to the ACGME-RRC



The Accreditation Council for Graduate Medical Education (ACGME) is a private, nonprofit council that evaluates and accredits residency programs in the United States. The ACGME has 28 Review Committees for each of the specialties. Members of the Residency Review Committees (RRCs) are appointed by the AMA Council on Medical Education and the appropriate medical specialty boards and organizations. The APA is a member organization of the RRC in Psychiatry. The APA sends two nominations to the RRC in Psychiatry for its resident member position. Nominees must be able to serve a two-year term before finishing training in Psychiatry or subspecialty fellowship. To be nominated by the APA, a resident must be an active APA member. Visit the ACGME RRC in Psychiatry [website](#) for more information.

### Selection Criteria:

- Ability to maintain confidentiality of program information
- Availability to attend two meetings a year\*
- Availability to review programs\*\*
- Experience in consensus- building group settings
- Ability to concisely write and orally present synthesized program information

*\* Travel expenses are covered by the ACGME*

*\*\* Approximately 8-12 hours of review for each meeting)*

# Section 2: Fellowships

The APA manages multiple fellowships for Resident-Fellow Members that are funded by the APA, the American Psychiatric Foundation, and various outside organizations through federal and private grants. Each fellowship maintains different standards of eligibility and funding, which can be subject to change.

**Sunshine Act Disclaimer:** Pharmaceutical companies supporting any grant, fellowship or award are required to publicly report any money provided to the physician, whether as stipend, meals, travel or in support of a grant, fellowship or award on a public database through the Centers for Medicare and Medicaid Services. Reporting is legally *required only* if the physician has completed their four year residency in psychiatry. *However*, some of the sponsoring companies may report any physician payments, *regardless* of the stage of their career.

## A. American Psychiatric Leadership Fellowship

Funding is provided by the American Psychiatric Foundation  
[www.americanpsychiatricfoundation.org/leadershipfellow](http://www.americanpsychiatricfoundation.org/leadershipfellow)

The American Psychiatric Leadership (APL) Fellowship Program is the oldest and most prestigious fellowship program in the APA. It has contributed to introducing residents to organized psychiatry and launching the careers of many leaders in the field. APL Fellows have the opportunity to network with residents from around the country and serve alongside psychiatrists who are considered leaders in their area of expertise. Fellows are immersed in the governance structure of the APA through service on a Council and receive supplemental training on topics such as leadership development, mentorship, media interaction, and advocacy. The APL Fellowship is a unique opportunity for residents to engage, interact and participate at a national level and further develop their professional networks and psychiatric experience.

**Award:** Travel support to APA Annual Meeting and September Components Meeting for two years.

**Number of Awards:** 5 per year

### Eligibility:

- APA Resident-Fellow Member
- PGY-2 at time of application
- Passed appropriate board examinations (*i.e.* USMLE 1-3; COMLEX 1-3; Canadian QE; LMCC 1-2)
- Only one nomination per training program
- Must not be in another APA or APF Fellowship program

### Submission Requirements:

- Completed [application form](#)
- Curriculum Vitae
- Personal Statement of 500 words or less regarding career vision, insight into larger issues facing psychiatry and how the American Psychiatric Leadership Fellowship would benefit career goals.
- Letter of Recommendation from Residency Training Director/Department Chair.

### Selection Criteria:

- *Clinical Skills:* Demonstrated clinical excellence in residency through evaluations and awards.
- *Leadership:* Demonstrated leadership in psychiatric and/or other medical pursuits prior to and during residency, including any community and/or regional leadership activities.
- *Involvement:* Involvement in components and/or activities in residency training program, hospital, university, APA (including District Branches), state/national psychiatric organizations, other medical organizations, and/or within the community.
- *Research/Publications:* Demonstrated academic accomplishment in research and publication prior to or during residency training.
- *Teaching:* Demonstrated academic accomplishment teaching residents, medical students and/or the community, with evidence of excellence such as awards, notable feedback and/or other recognition. This includes presentations at departmental Grand Rounds.

**Where to Apply:** All materials should be submitted either electronically to [apl@psych.org](mailto:apl@psych.org) or mailed to the APA, attention Rosa Bracey.



## **B. Jeanne Spurlock, M.D. Congressional Fellowship**

*Funding is provided by the American Psychiatric Foundation*

[www.psychiatry.org/practice/professional-interests/diversity/awards-and-fellowships/minority-fellowships/jeanne-spurlock-congressional-fellowship](http://www.psychiatry.org/practice/professional-interests/diversity/awards-and-fellowships/minority-fellowships/jeanne-spurlock-congressional-fellowship)

The Jeanne Spurlock Congressional Fellowship provides all psychiatry residents, fellows and early career psychiatrists an opportunity to work in a Congressional office on federal health policy, particularly policy related to child and/or minority issues. One award recipient per year serves a ten-month fellowship in Washington, DC starting in January. The fellow is introduced to the structure and development of federal and Congressional health policy procedures, with a focus on mental health issues affecting minorities and underserved populations, including children. Fellows traditionally help develop legislative proposals, track and analyze legislative initiatives, arrange hearings, brief Members of Congress and their staff, and interact with their constituents. During the fellowship, recipients have opportunities to interact with health policymakers and advocacy/professional groups, including the APA. The recipient will be required to submit a written summary of the Fellowship experience at the end of the fellowship and may make recommendations or suggestions for improving it.

### **Award:**

- \$85K stipend
- Travel support to and from Washington, DC for congressional interviews & moving expenses to the DC area
- Health Insurance (if not covered by training program or individual insurance plan)
- Travel support to attend the APA Annual Meeting (if funds are available)

### **Eligibility:**

- APA Member (RFM or ECP)
- U.S. citizen or permanent resident

### **Submission Requirements:**

- Curriculum Vitae
- Two letters of recommendation from psychiatrists who have personal knowledge of the applicant's clinical expertise, interpersonal skills, and interest in minority mental health and underserved populations, including children.
- Statement or essay giving the reasons for applying for this fellowship, including any past educational and/or political experience that would enhance performance in a Congressional office. While not an absolute requirement, demonstrated experience with child and/or minority mental health programs, advocacy and/or policy development is encouraged.
- Detailed letter (no more than two typed pages) from the department chair or training director delineating the candidate's qualifications and describing plans the institution may have for using the experience to be gained. For early career psychiatrists, a letter from their District Branch President or Executive Director noting contributions to the DB of the applicant and how this experience will enhance the DB and its community.

### **Selection Criteria:**

The Jeanne Spurlock Congressional Fellowship Selection Committee reviews all applications. Personal interviews between top-ranked applicants and members of the Committee are arranged by the APA. Award recipients are encouraged to maintain membership in the APA and expected to serve on the Selection Committee for at least three years upon completion of the fellowship.

### **Where to Apply:**

All materials should be submitted either electronically to [mking@psych.org](mailto:mking@psych.org), faxed to 703-907-7894, or mailed to the APA, attention Marilyn King.

## **C. Public Psychiatry Fellowship**

*Funding is provided by the American Psychiatric Foundation and Bristol-Myers Squibb*

[www.psychiatry.org/residents/public-psychiatry-fellowship](http://www.psychiatry.org/residents/public-psychiatry-fellowship)

The APA Public Psychiatry fellowship program provides support for a group of outstanding residents interested in the field of public and community psychiatry. The purpose of the APA Public Psychiatry fellowship program are to (1) provide experiences that will contribute to the professional development of residents who will play leadership roles within the public sector in future years and (2) to heighten awareness of the psychiatric residents of the many activities of psychiatry in the public sector and of the career opportunities in this area.

**Award:** Travel support to September Components Meeting and Institute on Psychiatric Services (IPS) for two years.

**Number of Awards:** 10 per year

**Eligibility:**

- APA Resident-Fellow Member
- Only one resident nominated per residency program
- PGY-1 to PGY-3 in an accredited US or Canadian psychiatry residency program
- Must not be in ACORF or another APA or APF Fellowship program

**Submission Requirements:**

- Completed [application form](#)
- Two-page essay
- Letter of Nomination – from residency training director or department chair

**Selection Criteria:**

- *Public Service & Leadership*: Evidence of volunteer work/activities with underserved populations (not including required residency activities), advocacy pursuits and/or leadership and/or collaborative capacity.
- *Creative Pursuits*: Evidence of creative activity (i.e.: research, program development, editorials, etc.). Include presentations, publications, and grants.
- *Academic Record*: Undergraduate training, medical school, and graduate training (e.g., MPH), special clinical training and/or any awards received by the applicant.
- *Personal Statement*: Quality of the personal statement indicating the applicant's dedication to serving underserved populations with mental illness.

**Where to Apply:** All materials should be submitted either electronically to [mking@psych.org](mailto:mking@psych.org) or mailed to the APA, attention Marilyn King.

## D. Child and Adolescent Psychiatry Fellowship

*Funding is provided by the American Psychiatric Foundation*

[www.americanpsychiatricfoundation.org/what-we-do/fellowships/child-and-adolescent-psychiatry-fellowship](http://www.americanpsychiatricfoundation.org/what-we-do/fellowships/child-and-adolescent-psychiatry-fellowship)

The Child and Adolescent Psychiatry Fellowship is designed to promote interest among general psychiatry residents in pursuing careers in child and adolescent psychiatry. Fellows engage with other general psychiatry residents with a future in child and adolescent psychiatry and learn about new clinical research, successful treatments for child and adolescents with mental disorders and many other issues associated with child and adolescent mental health. Fellows also experience the unique opportunity of meeting and networking with future child and adolescent psychiatrists and leaders in the field and being matched with a mentor.

**Award:** Travel support for two Annual Meetings and submit a proposal for a presentation at the second Annual Meeting.

**Eligibility:**

- APA Resident-Fellow Member
- PGY-1 to PGY-3 resident in an accredited US or Canadian psychiatry residency program
- Approval from Residency Training Director or Department Chair

**Submission Requirements:**

- Only two applicants will be accepted from a training program
- Completed [application form](#)
- Curriculum Vitae
- Letter of Interest (detailing experience, knowledge, career path and how you will make use of the fellowship) - Should not exceed 500-words
- Letter of Support (from Residency Training Director or Department Chair addressing resident's potential contribution to the field of child and adolescent psychiatry)

**Where to Apply:** All materials should be submitted either electronically to [kids@psych.org](mailto:kids@psych.org) or mailed to the APA, attention Alison Bondurant.

## E. Minority Fellowships

[www.psychiatry.org/practice/professional-interests/diversityomna/awards-and-fellowships/minority-fellowships/minority-fellowships](http://www.psychiatry.org/practice/professional-interests/diversityomna/awards-and-fellowships/minority-fellowships/minority-fellowships)

The Minority Fellowships Program (MFP) endeavors to eliminate racial and ethnic disparities in mental health and substance use care by providing specialized training to psychiatry residents and medical students interested in serving minority communities. It is designed to (1) provide fellowship recipients with enriching training experiences through participation in the APA September Components and Annual Meetings, (2) provide recipients with resources to support activities that enhance culturally relevant aspects of their training programs, (3) stimulate their interest in pursuing training in areas of psychiatry where minority groups are underrepresented, such as research, child psychiatry, and addiction psychiatry, and (4) develop leadership to improve the quality of mental health care for the following federally recognized ethnic minority groups: American Indians, Native Alaskans, Asian Americans, Native Hawaiians, Native Pacific Islanders, African Americans and Hispanics/Latinos. All applicants are welcome to apply regardless of race, ethnicity, gender, national origin, religion, sexual orientation or disability.

### 1. **APA/SAMHSA Fellowship**

---

*Funding is provided by the Substance Abuse and Mental Health Services Administration (SAMHSA)*

---

**Award:**

- Travel support to APA September Components Meeting (1st year only; recipient may apply for a 2nd year with no additional funds)
- \$20-25K stipend for various projects and travel to conferences like the APA annual meeting, etc. Stipend level varies based on fellows PGY level as of July of the year they apply

**Number of Awards:** Varies based on funding from SAMHSA (awarded between 20-26 over the last couple of years)

**Eligibility:**

- APA Resident-Fellow member
- Enrolled as a PGY2 to PGY3 in an accredited US psychiatry residency program
- Must be in training during the duration of the Fellowship
- American citizen or permanent resident
- Federal employees are ineligible

**Submission Requirements:**

- Completed [application form](#)
- Curriculum Vitae
- Three letters of reference
- Essay outlining career goals
- Proposed budget plan prepared with training director

**Selection Criteria:**

- Commitment to serve ethnic minority populations
- Awareness of the importance of culture in mental health
- Interest in the interrelationship between mental health/illness and transcultural factors
- Demonstrated leadership abilities

**Where to Apply:** All materials should be submitted either electronically to [mking@psych.org](mailto:mking@psych.org), faxed to 703-907-7894, or mailed to the APA, attention Marilyn King.

### 2. **Diversity Leadership Fellowship**

---

*Funding is provided by the American Psychiatric Foundation*

---

The APA Diversity Leadership Fellowship (DLF) is designed to meet the following goals: identify and motivate a cadre of ethnic minority psychiatry residents who, through the experiential and training opportunities of the program, will become well-equipped leaders in psychiatry who will teach, administer, conduct services research, and provide culturally competent, evidence based mental health and substance use disorder services to diverse and underserved populations.

**Award:**

- Travel support to APA Annual Meeting and the September Components Meeting for two years
- Travel support may be offered to attend the IPS meeting and other allied conferences (dependent on funding availability)

**Number of Awards:** 10 per year

**Eligibility:**

- APA Resident-Fellow Member
- PGY-2 by July of the year of application
- In training during the entire academic year
- Applicants need not be U.S. citizens, permanent residents, or graduates of a U.S. medical school
- Federal employees are ineligible

**Submission Requirements:**

- Completed [application form](#)
- Curriculum Vitae
- Three letters of reference
- Essay outlining career goals

**Selection Criteria:**

- Commitment to serve ethnic minority populations
- Awareness of the importance of culture in mental health
- Interest in the interrelationship between mental health/illness and transcultural factors
- Demonstrated leadership abilities

**Where to Apply:** All materials should be submitted either electronically to [mking@psych.org](mailto:mking@psych.org), faxed to 703-907-7894, or mailed to the APA, attention Marilyn King.

### 3. **APA/SAMHSA Substance Abuse Fellowship**

---

*Funding is provided by the Substance Abuse and Mental Health Services Administration (SAMHSA)*

---

The APA/SAMHSA Substance Abuse Fellowship is used as an effective means for getting trained mental health professionals to work in the public mental health system. Because substance abuse is one of the most devastating health and social issues currently confronting America, SAMHSA's Center for Substance Abuse Treatment (CSAT) and the Center for Substance Abuse Prevention (CSAP) have provided funding specifically addressing substance abuse treatment.

**Award:**

- Provides monthly stipends (subject to fund availability)
- Travel related expenses in connection with fellow's attendance at program-related activities.

**Number of Awards:** Varies based on funding from SAMHSA (awarded between 2-4 in previous years).

**Eligibility:**

- APA Resident-Fellow Member
- PGY-5 by July of year of application in a substance use training program approved by the affiliated medical school or agency where a significant number of substance use patients are from minority and underserved groups
- *American citizen or permanent resident* - permanent residents must submit a notarized statement indicating possession of the alien registration receipt card, I-151 or I-551 by July
- Individuals on temporary or student visas are not eligible
- Federal employees are not eligible

**Submission Requirements:**

- Completed [application form](#)
- Curriculum Vitae
- Three letters of reference
- Essay outlining career goals
- Proposed budget plan prepared with training director

**Selection Criteria:**

- Commitment to serve underrepresented populations
- Demonstrated leadership abilities
- Interest in the interrelationship between mental health/illness and transcultural factors

**Where to Apply:** All materials should be submitted either electronically to [mking@psych.org](mailto:mking@psych.org), faxed to 703-907-7894, or mailed to the APA, attention Marilyn King.

## F. Research Fellowships

[www.psychiatry.org/researchers/research-training-and-career-distinction-awards](http://www.psychiatry.org/researchers/research-training-and-career-distinction-awards)

### 1. Psychiatric Research Fellowship

*Funding is provided by Eli Lilly and Company*

The American Psychiatric Association is sponsoring the one-year Psychiatric Research Fellowship, for two post-graduate psychiatry trainees specifically to focus on research and personal scholarship. Minimal time (less than 15%) will be devoted to teaching, patient care, consultation, or other duties. The protection of time for research should be assured by the department chair.

**Award:** \$45,000 stipend award will be paid to each institution for disbursement to the fellow. The fellow's institution must agree not to deduct indirect costs or tuition payments (but may augment the stipend).

**Number of awards:** 2 per year

**Eligibility:**

- APA Resident-Fellow Member
- Received MD or DO degree
- Completed residency training in general psychiatry or child psychiatry immediately prior to the time the fellowship commences.
- Receiving training in the U.S. or Canada
- Demonstration of significant research potential
- No extensive research training prior to residency and not already an established investigator

**Submission Requirements:**

- Curriculum Vitae
- Letter of Recommendation from department chair describing: Candidate's accomplishments, activities and institutional resources available to support the applicant in his/her research training endeavors.
- Statement (1-4 pages) - Describing: a) his/her career goals and b) the specific objectives for his/her research training fellowship and the specific plans for meeting those objectives.
- Preceptor Statement - Describing: Preceptor's accomplishments as both a researcher and mentor, and the specific responsibilities the preceptor would have regarding the applicant's research training program

**Selection Criteria:**

The selection committee will consist of three to five members of the APA Council on Research or a subcomponent thereof. Applications are evaluated on the basis of the following criteria:

- Applicant's qualifications
- Preceptor's qualifications
- Quality of research training plan
- Adequacy of institutional resources and facilities

**Where to Apply:** All materials should be submitted either electronically to [psychresearch@psych.org](mailto:psychresearch@psych.org) or mailed to the APA, attention Alison Bondurant.

### 2. Resident Psychiatric Research Scholars

*Funding is provided by the American Psychiatric Foundation and Janssen Pharmaceuticals*

A program to identify promising psychiatric residents with the potential to become leaders in clinical and health services research in all areas of psychiatric research. Emphasis is placed on special mentoring and career enrichment programs at the APA Annual Meeting and throughout the year. Each participant is asked to identify an individual research mentor who will oversee the resident's fellowship. The mentor advises and encourages the scholar during the one-year fellowship.

**Award:**

- Travel support to APA Annual Meeting
- \$2,500 award for use in developing a pilot research project, obtaining statistical consultation, or visiting potential research training programs (Fellow's institution must agree not to deduct indirect cost from stipend)

**Number of Awards:** 20 per year

**Eligibility:**

- PGY-1 to PGY-3

**Submission Requirements:**

- Completed application form (request application by emailing [scholars@psych.org](mailto:scholars@psych.org))
- Curriculum Vitae

- Letter of Recommendation from chairman describing: Candidate's accomplishments, activities and institutional resources available to support the applicant in his/her research training endeavors.
- Statement (1-2 pages) - Describing: career development, research interests, plans for developing a career in psychiatric research, and post residency training plans
- Research Proposal Plan (1-3 pages) - Detailing planned use of grant, relevance to career development, proposed activities timeline, and detailed budget
- Mentor - the identification of local mentor available to assist project development

*An advisory committee of senior researchers will assist in the evaluation and selection of the Scholars.*

**Where to Apply:** All materials should be submitted either electronically to [scholars@psych.org](mailto:scholars@psych.org) or mailed to the APA, attention Rosa Bracey

### 3. Schizophrenia Research Fellowship

*Due to funding issues, not accepting applications at this time.*

The American Psychiatric Foundation sponsors a one-year Psychiatric Research Fellowship for three post-graduate psychiatry trainees specifically to focus on research and personal scholarship. Minimal time (less than 15%) will be devoted to teaching, patient care, consultation, or other duties. The protection of time for research should be assured by the department chairman.

**Award:** A stipend of \$45,000 will be paid to each institution for disbursement to the fellow. The institution must agree not to deduct indirect costs or tuition payments, but may augment the stipend

**Number of Awards:** 3 per year

**Eligibility:**

- APA Resident-Fellow Member
- Received MD or DO degree
- Completed residency training in general psychiatry or child psychiatry immediately prior to the time the fellowship commences
- Receiving training in the U.S. or Canada
- Demonstrate significant research potential
- No extensive research training prior to residency
- Not already an established investigator

**Submission Requirements:**

- Curriculum Vitae
- Letter of Recommendation from department chair describing: Candidate's accomplishments, activities and institutional resources available to support the applicant in his/her research training endeavors
- Statement (1-4 pages) - Describing: a) his/her career goals and b) the specific objectives for his/her research training fellowship and the specific plans for meeting those objectives
- Preceptor Statement - Describing: Preceptor's accomplishments as both a researcher and mentor, and the specific responsibilities the preceptor would have regarding the applicant's research training program

**Selection Criteria:**

The selection committee will consist of members of the APA Council on Research. Applications are evaluated on the basis of the following criteria:

- Applicant's qualifications
- Preceptor's qualifications
- Quality of research training plan
- Adequacy of institutional resources and facilities

# Section 3: Awards and Competitions

## A. Resident Recognition Award

*Funding is provided by the American Psychiatric Association*

[www.psychiatry.org/residents/fellowships-awards/apa-resident-recognition-awards](http://www.psychiatry.org/residents/fellowships-awards/apa-resident-recognition-awards)

These awards are presented annually to a psychiatric resident or fellow from each department or institution. Departments are eligible to nominate one APA Resident-Fellow Member who exemplifies one or more APA values. Program directors should consider all psychiatric trainees (general, CAP, combined, fellows). Every eligible psychiatry resident training program is encouraged to choose an outstanding trainee and submit their name to the APA. Each institution may select only one resident for this award annually. The award certificates are sent directly to the residency training program.

**Awards:** Each selected winner will receive an award certificate.

**Number of Awards:** Varies. Each eligible nominee will receive the award.

### Eligibility:

- APA Resident-Fellow Member
- Good standing in general psychiatry or fellowship program
- One nominee per training program

### Submission Requirements:

- Curriculum vitae
- [Nomination Form](#)
- Nomination letter must contain information documenting the candidate's achievement as outlined in the selection criteria above. Only one candidate from each institution/department may be nominated by the recommending institution.

### Selection Criteria:

- *Compassion*, as evidenced by exemplary patient care and/or compassion to colleagues and in the workplace
- *Leadership* in the field of psychiatry as evidenced by holding leadership roles in individual residency programs, at the District Branch level of the APA and/or at the national level
- *Community Service* on the local or national level
- *Political Action* on behalf of their patients, their profession, and/or their community.
- *Clinical Excellence* as evidenced by exemplary patient care.

Where to Apply: All materials should be submitted either electronically to [cvanwagner@psych.org](mailto:cvanwagner@psych.org) or mailed to the APA, attention Claire Van Wagner.

## B. Resident Research Award

*Funding is provided by Eli Lilly and Company*

[www.psychiatry.org/researchers/research-training-and-career-distinction-awards/resident-research-award](http://www.psychiatry.org/researchers/research-training-and-career-distinction-awards/resident-research-award)

The APA Resident Research Award Competition provides an honorarium to five psychiatry residents who submit the best original, unpublished scientific paper. Research may be conducted in any area of psychiatry. In addition, award is given to the residency program in which the resident was in training at the time the work was completed.

**Awards:** \$1,500 to the winning resident and \$1,000 to the residency program.

**Number of Awards:** 5 annually

### Eligibility:

- Resident/fellow in accredited psychiatry training program in U.S./Canada at time of submission.
- Applications will not be accepted from previous winners of this award
- Please note that the paper must describe original scientific research; case reports and literature reviews will not be accepted

### Submission Requirements:

Only one paper per applicant is accepted

The nomination packet should include the following:

- Curriculum Vitae



- Research paper (unpublished, finished paper, suitable for publication, which outlines conducted research scope and results, describes research study, includes literature review and discussion)
- Signed statement by director of residency training or the chairperson verifying work was performed during the applicant's residency training, indicating if work was undertaken in more than one setting or if work was done prior to entry into the current residency training program

**Selection Criteria:**

In order to ensure a fair and impartial review, the Award Board reviews each submission anonymously with no identifying information on the resident or the affiliated training program. *It is helpful if the resident's name is not printed on each page of the document.*

- The award is given entirely to the resident who is the senior author. If two or more applicants attest that they have contributed equally to the project, the honorarium may be shared.
- Should the work have been completed in another setting in which the resident is no longer in training, the departmental award is given to the previous department.
- Should the paper be published at a later date, appropriate acknowledgement is made
- While working with senior colleagues is encouraged, the work submitted must be that primarily of the applicant, rather than of the senior faculty member or investigator.

**Where to Apply:** All materials should be submitted either electronically to [residentresearch@psych.org](mailto:residentresearch@psych.org) or mailed to the APA, attention Alison Bondurant.

### C. Research Colloquium for Junior Investigators

*Funding is provided by National Institutes of Health*

[www.psychiatry.org/researchers/research-training-and-funding/research-colloquium-for-junior-investigators](http://www.psychiatry.org/researchers/research-training-and-funding/research-colloquium-for-junior-investigators)

The purpose of the colloquium is to provide guidance, mentorship and encouragement to young investigators in the early phases of their training. Junior investigators have the opportunity to obtain feedback about their past, present, and future research from mentors who are at the top of their field in a small group setting as well as general information about career development and grantsmanship. An all-day workshop for junior psychiatric investigators focuses on the Areas of Focus.

**Award:** \$1,000 for travel expenses to the APA meeting

**Number of Awards:** 24-30 junior researchers annually

**Eligibility:**

- APA Resident-Fellow Member or be eligible to become members of the APA
- Must be in a U.S. or Canadian training program
- Senior psychiatry resident, fellow, junior faculty
- Interest and potential in developing research career in following **Areas of Focus:** *Molecular, Translational, and Neuroscience Research, Clinical Psychobiology, Treatment from Psychopharmacology, and Psychotherapy to Neural Strategies*
- Applicants with individual federal research awards (e.g. R-01) and past participants of the Research Colloquium are not eligible
- Investigators conducting minority health and health disparities research in these subject areas are especially encouraged to apply

**Submission Requirements:**

- Completed [application form](#)
- Curriculum Vitae
- Two-page statement describing current and proposed research projects
- [500 word abstract](#) by the nominee of a study in progress or completed
- 250-word statement by the nominee describing how attendance at the colloquium will further his/her career goals
- Sponsor's letter of recommendation, from the nominee's research mentor or other faculty member, describing the nominee's potential as a researcher and his/her potential to benefit from the colloquium.

Presented by the American Psychiatric Association in conjunction with a research training advisory committee.

- If accepted to attend the colloquium, this abstract should be used for the poster session.
- If accepted, participants will be asked to give an oral and poster presentation of their study.

**Where to Apply:** All materials should be submitted either electronically to [colloquium@psych.org](mailto:colloquium@psych.org) or mailed to the APA, attention Sejal Patel.



## D. Kempf Fund Award for Research Development in Psychobiological Psychiatry

*Funding is provided by American Psychiatric Foundation*

[www.psychiatry.org/researchers/research-training-and-funding/kempf-fund-award-for-research-development-in-psychobiological-psychiatry](http://www.psychiatry.org/researchers/research-training-and-funding/kempf-fund-award-for-research-development-in-psychobiological-psychiatry)

This award recognizes a senior researcher who has made a significant contribution to research on the causes and treatment of schizophrenia as both a researcher and a mentor.

**Award:** \$1,500 to the senior researcher and \$20,000 research career development of a young research psychiatrist working in a mentor-trainee relationship with the award winner on further research in this field.

**Number of Awards:** 1 annually

### **Selection Criteria:**

Submissions are judged on the excellence of the nominee's overall contribution to the body of research in schizophrenia. The selection committee will consist of members of the APA Council on Research. Applications are evaluated on the basis of the following criteria:

- Candidate's accomplishments and activities
- Need for the award
- Adequacy of institutional resources and facilities, including senior faculty with whom the young faculty award designate can collaborate
- Quality of a brief research plan for the coming academic year
- **Three letters of recommendation**

**How to Apply:** All materials should be submitted either electronically to [kempf@psych.org](mailto:kempf@psych.org) or mailed to the APA, attention Marilyn King.

## E. Resident Poster Competition

*Funding is provided by the American Psychiatric Association*

[www.psychiatry.org/residents/resident-poster-competition](http://www.psychiatry.org/residents/resident-poster-competition)

The APA recognizes the best resident and medical student poster at a special Resident Poster Session at the APA Annual Meeting. Abstracts are judged by the editors of Academic Psychiatry and awards are presented during the poster sessions. All submissions are automatically accepted and the resident is required to be onsite during the poster session. Awards are given to the best poster in each of the 5 categories:

- Community Service
- Curriculum Development and Education
- Patient Care and Epidemiology
- Psychosocial and Biomedical
- Clinical Case Studies

**Award:** Certificate awarded during Poster Presentation at the APA Annual Meeting.

**Number of Awards:** One award for each of the 5 categories

## F. Mind Games National Residency Team Competition

*Funding is provided by the American Psychiatric Association*

[www.psychiatry.org/residents/Mind-Games-Resident-Competition](http://www.psychiatry.org/residents/Mind-Games-Resident-Competition)

Mind Games is APA's national residency team competition and is intended to be a fun, educational activity challenging residents on patient care and medical knowledge. A preliminary round takes place in February of each year. The top3 scoring residency programs send their team to the national Mind Games competition held during the APA Annual Meeting.

**Award:** Trophy for the overall champion at the APA Annual Meeting.

**Number of Awards:** Top 3 teams qualify for the finals, only 1 overall champion

### **Eligibility:**

- APA Resident-Fellow Members
- The team can be made up of members from the general/adult psychiatry residency or fellowship programs (i.e. Child)
- Any Department of Psychiatry is eligible to form a team

**Submission Requirements:**

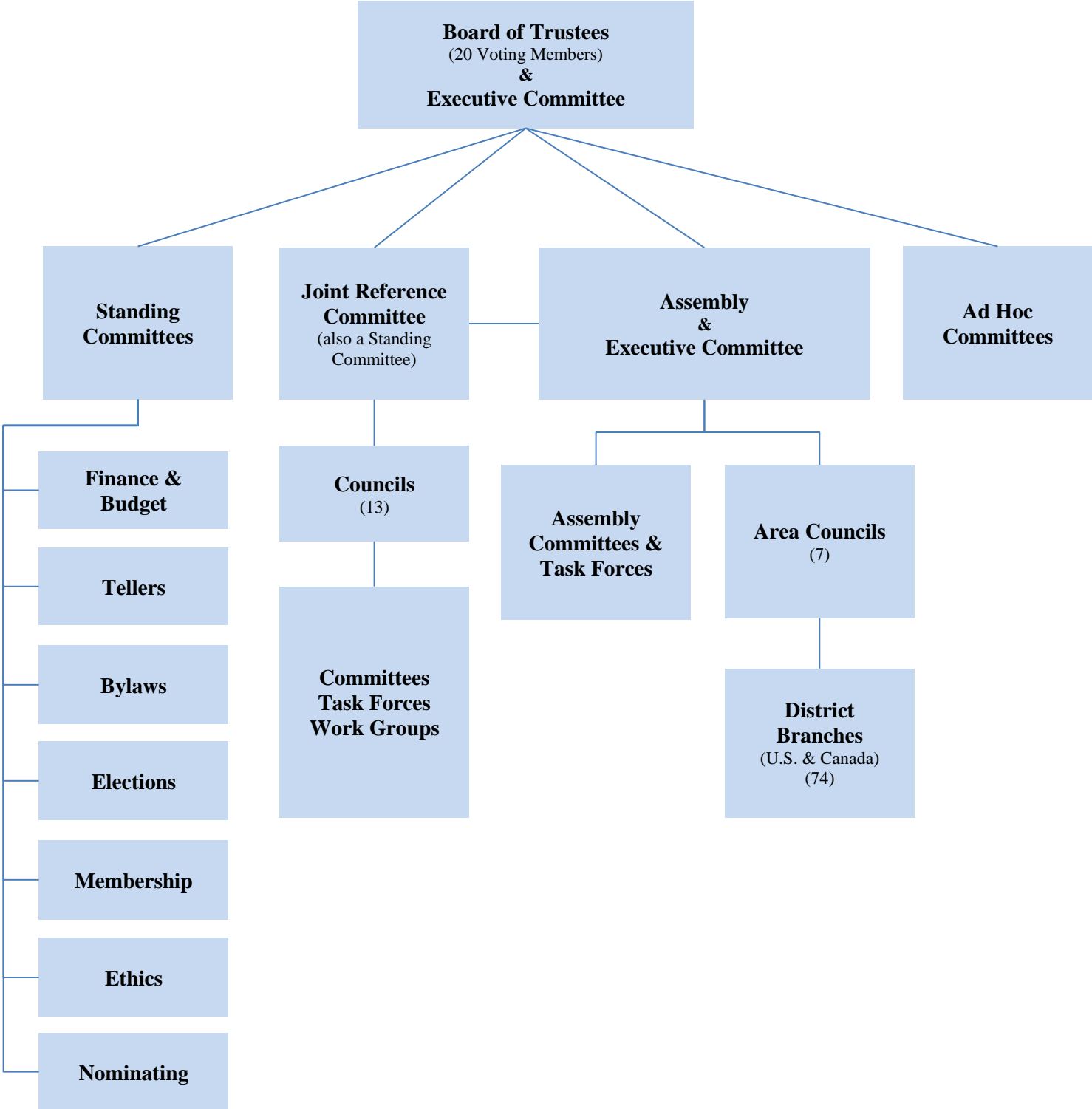
To prepare for this competition, the Training Director and/or Chair must select three (3) residents who will form the program team. The team (together) takes a timed online examination - 150 multiple choice questions in 60 minutes. Questions cover various topics in psychiatry including history, epidemiology and neurology.

**Selection Criteria:**

The three highest scoring teams with the fastest posted time advance to compete in the live national competition.

# Section 4: Governance Structure of the APA

[www.psychiatry.org/about-apa--psychiatry/governance](http://www.psychiatry.org/about-apa--psychiatry/governance)



## A. Board of Trustees

The **Board of Trustees**, composed of officers and trustees, elected by the membership, governs the Association. The power to make policy is vested in the Board, and the Board's primary function is to formulate and implement the policies of the Association. The Board exercises all powers of the Association that are not otherwise assigned. Trustees are expected to attend all Board meetings and participate in the matters at hand, for they cannot delegate responsibility to govern or give a proxy vote. Area Trustees are ex-officio members of their respective Area Councils (non-voting).

### **Voting members of the Board of Trustees:**

- President (Chairperson)
- President-elect
- Secretary
- Treasurer
- Three immediate Past Presidents
- Speaker of the Assembly
- Speaker-Elect of the Assembly
- One Trustee elected by the membership of each geographical area as defined by the Assembly (Seven )
- One Trustee-at-Large
- One Minority Under-Represented (MUR) Trustee (elected by Minority Caucuses)
- One Early Career Psychiatrist (ECP) Trustee elected at large
- Resident-Fellow Member Trustee (elected by the RFMs)

### **Non-voting members of the Board of Trustees:**

- Past presidents elected prior to 2000
- Resident-Fellow Member Trustee-Elect elected by RFMs who serve a one-year term without a vote and advance to Resident-Fellow Member Trustee

### **Guests of the Board of Trustees:**

- Representative from American Psychiatric Leadership Fellowship
- Representative from APA/SAMHSA or Diversity Leadership Fellowship
- Representative from APA Public Psychiatry Fellowship

The President, President-Elect, Secretary, Treasurer, ECP Trustee-at-Large, and one Trustee-at-Large are elected by the entire eligible voting membership. The Resident-Fellow Member Trustee-Elect is elected by the Resident-Fellow Members. One Minority Under-Represented (MUR) Trustee is elected by the Minority Caucuses. Candidates are selected by the Nominating Committee, with recommendations received from members, or nominated by petition. The seven Area Trustees are nominated by their Area Councils and elected by the members belonging to district branches within their respective areas.

The **Board Executive Committee** is composed of the President (Chairperson), President-Elect, Secretary, Treasurer, Immediate Past President, Assembly Speaker, and the APA CEO & Medical Director (non-voting).

### **1. Standing Committees**

The Bylaws establish eight committees to conduct the business affairs of the Association: Finance and Budget; Bylaws; Elections; Ethics; Joint Reference; Membership; Nominating; and Tellers. With the exception of the Joint Reference Committee, whose composition is specified, the President designates the committees' chairpersons and fills the vacancies in the membership of the committees.

### **2. Joint Reference Committee**

The Joint Reference Committee (JRC) is a standing committee that acts as a liaison between the Board, Assembly, and the APA's components. It ensures that matters receive thorough review and consideration by referring items to the appropriate components within the APA. It then reviews recommendations and transmits proposals to the Assembly and Board for action.

**Voting Members of the JRC**

- President-Elect (Chairperson)
- Speaker-Elect (Vice Chairperson)
- Immediate Past President
- One additional member of the Board of Trustees (appointed by President)
- Two additional members of the Assembly
- APA CEO & Medical Director

**Non-Voting Members of the JRC**

- Chairpersons of Councils

**Observers (non-voting) of the JRC**

- Representative from American Psychiatric Leadership Fellows
- Representative from APA/SAMHSA or Diversity Leadership Fellows
- Representative from APA Public Psychiatry Fellows

**Councils** are established by the Board and dedicated to specific topics of interest to the Association. Each Council is composed of up to twelve voting members, including the chairperson. One member of the Council must be an ECP and one member of the Council is selected from the Assembly. Corresponding members, without vote on Council actions, may be appointed at the discretion of the President. Appointments and tenures are staggered to ensure continuity on the Council. Up to two consultants may be appointed as needed, *but only in rare instances*. Where applicable, a current member of a Council may be identified as a liaison to a subspecialty organization. Councils are authorized to create and eliminate informal work groups and are authorized to act, subject to approval of the Board, within their area of interest to implement the objectives of the Association.

**Committees** are established within a Council to perform ongoing functions (as opposed to time- and task-limited functions). A Council reassesses the need for a committee every three years. They are composed of up to six voting members. **Subcommittees** are established at the request of a committee, typically in extraordinary circumstances, upon determining the need for the performance of a continuing function (distinct from a project-oriented and time-limited task) that falls within its purview. They are customarily composed of six members or fewer. **Task Forces** are established to carry out a specific, time-limited task and are discharged upon submission of a final report. They are composed of up to four members, including the chairperson. **Caucuses** are groups of self-selected special interest psychiatrists for whom there is no other vehicle or subspecialty organization already relating to the Association. A minimum of ten APA members is required to form a caucus. **Work Groups** are established within a Council and is usually comprised of Council members to address specific projects of short duration.

The following are the twelve Councils and their committees. Each year, soon after his/her election, the President-Elect begins to make appointments for the terms starting the following May. If you are interested in becoming a member of a Council or committee, please write directly to the President-Elect, c/o Association Governance, APA Central Office. Please be sure to enclose a curriculum vitae and background information demonstrating your qualifications for a particular role. You may also wish to speak to the chairperson of the Council or committee in which you are interested or contact the Speaker or Speaker-Elect of the Assembly.

Don't be discouraged if you are not appointed the first time. The Association is fortunate in having hundreds of qualified members who are willing to serve, but there are only 50+ available positions each year.

**Council on Addiction Psychiatry**  
**Council on Advocacy & Government Relations**

- Committee on Advocacy & Litigation Funding (CALF)
- Caucus of State Hospital Psychiatrists
- Caucus of VA Psychiatrists

**Council on Children, Adolescents & their Families**

- Agnes Purcell McGavin Award Selection Committee
- Blanche F. Ittleson Research Award Committee
- Caucus of Psychiatrists Treating Persons with Intellectual Disabilities
- Caucus on College Mental Health

**Council on Communications**  
**Council on Geriatric Psychiatry**  
**Council on Healthcare Systems & Financing**

- Committee on Reimbursement for Psychiatric Care
- Committee on RBRVS, Codes and Reimbursements

**Council on International Psychiatry**  
**Council on Medical Education & Lifelong Learning**

- APA Public Psychiatry Fellowship Selection Committee
- APA/SAMHSA Minority Fellowship Selection and Advisory Committee
- Subcommittee on Joint Sponsorship of Continuing Medical Education (CME)
- Scientific Program Committee
- Scientific Program Committee of the Institute on Psychiatric Services

- Vestermark Award Committee
- Caucus of Maintenance of Certification (MOC)
- Caucus of Resident-Fellow Members

**Council on Minority Mental Health & Health Disparities**

- Caucus of Rural Psychiatrists
- Caucus on Spirituality, Religion & Psychiatry
- Caucus on Global Mental Health and Psychiatry

**Council on Psychiatry and Law**

- Committee on Judicial Action
- Isaac Ray/Human Rights Award Committee
- Manfred S. Guttmacher Award Committee
- Caucus of Correctional Psychiatrists

**Council on Psychosomatic Medicine (Consultation-Liaison Psychiatry)**  
**Council on Research**

- Committee on Research Awards
- Committee on Psychiatric Dimensions of Disaster
- Task Force to Revise the Practice of Electroconvulsive Therapy
- Caucus of Psychiatrists Treating Persons with Eating Disorders
- Caucus on Alternative and Complementary Medicine

**Council on Quality Care**

- Steering Committee on Practice Guidelines
- Committee on Mental Health Information Technology
- Caucus on Psychotherapy

### 3. Assembly

The [Assembly](#) is the national body that meets twice a year and represents the individual members in the affairs of the Association. It is composed of representatives from the Association’s district branches. It brings to the attention of the Board of Trustees and other components the concerns of District Branch members. In turn, the Board and its components often refer issues to the Assembly and the District Branches for consideration and study.

All representatives and deputy representatives to the Assembly are elected by procedures established by the pertinent group: District Branch, Area Council, Minority/Underrepresented Groups, Early Career Psychiatrists, Resident-Fellow Members, and Allied Organizations. Residents who want to get involved with the Assembly can do so through the [Assembly Committee of Area Resident-Fellow Member Representatives \(ACORF\)](#).

Assembly officers (Speaker-Elect and Recorder) are elected at the Assembly meeting prior to the Association’s Annual Meeting in May.

The **seven Area Councils** are regional links between the Assembly and the district branches. Each Area Council consists of representatives from each of the District Branches within the area, an Area Representative and Deputy Representative elected by the Council itself, an Area Early Career Psychiatrist Representative and Deputy Representative, an Area Resident-Fellow Member Representative and Deputy Representative, and Allied Organization Liaisons within the area. The Area Trustee to the Board of Trustees is an ex officio member. The Area Councils promote relationships between organized psychiatry and state governments, coordinate a range of branch activities, hold scientific meetings, and other programs in continuing medical education, and provide a forum for discussion of national and regional issues.

**Voting Members of the Assembly:**

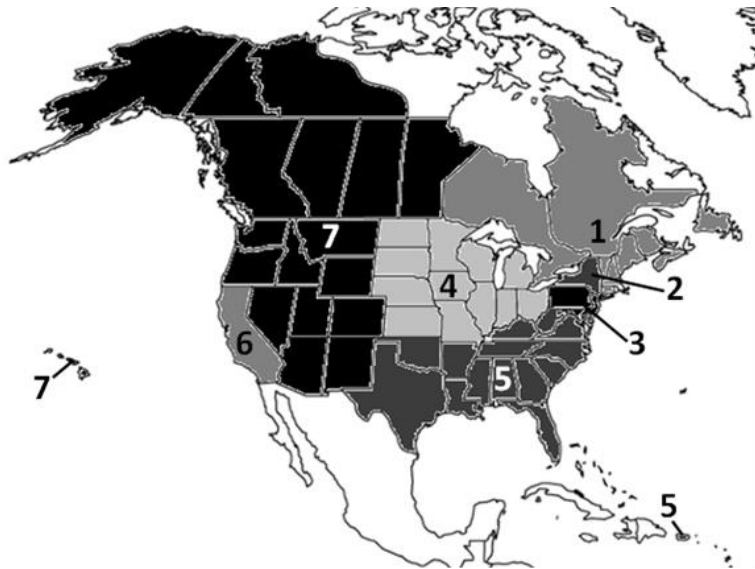
- Speaker
- Speaker-Elect
- Recorder
- Two voting past Speakers
- District Branch Representatives
- Seven Area Representatives
- Seven Area Deputy Representatives
- *Seven Resident-Fellow Member Area Representatives*
- Seven M/UR Representatives
- Seven Early Career Psychiatrist Area Representatives
- Allied Organization Liaisons

**Non-Voting Members of the Assembly:**

- District Branch Deputy Representatives
- Seven M/UR Deputy Representatives
- Seven Early Career Psychiatrist Area Deputy Representatives
- *Seven Resident-Fellow Member Area Deputy Representatives*
- Parliamentarian

**Seven Areas of the APA**  
(By State or Territory)

- Area 1: New England/Eastern Canada
- Area 2: New York
- Area 3: Middle Atlantic
- Area 4: North Central
- Area 5: South, Puerto Rico
- Area 6: California
- Area 7: West/Western Canada



**Assembly Minority/Under-Represented (M/UR) Caucuses**

- American Indian, Native Alaskan & Native Hawaiian Psychiatrists
- Asian American Psychiatrists
- Black Psychiatrists
- Hispanic Psychiatrists
- International Medical Graduate Psychiatrists
- Lesbian, Gay & Bisexual Psychiatrists
- Women Psychiatrists

**Assembly Allied Organizations**

- Academy of Psychosomatic Medicine
- American Academy of Addiction Psychiatry
- American Academy of Child & Adolescent Psychiatry
- American Academy of Clinical Psychiatrists
- American Academy of Psychiatry & Law
- American Academy of Psychoanalysis and Dynamic Psychiatry
- American Association for Emergency Psychiatry
- American Association of Community Psychiatrists
- American Association of Geriatric Psychiatry
- American Association of Psychiatric Administrators
- American Association of Social Psychiatry
- American Group Psychotherapy Association
- American Psychoanalytic Association
- American Society for Adolescent Psychiatry
- Association of Family Psychiatrists
- Association of Gay and Lesbian Psychiatrists
- Senior Psychiatrists
- Southern Psychiatric Association

**District Branches** are constituent parts of the Association that work locally to foster the science of psychiatry, promote its progress as a healing profession, and maintain high professional standards. Most correspond to state or metropolitan areas, the exception being the Society of Uniformed Services Psychiatrists. Each branch establishes dues for its members, elects its own officers, and arranges and funds its own programs. Each District Branch elects its own representatives to the Assembly.



## APA District Branches and State Associations (by Area)

Area 1	Area 2
07 Connecticut Psychiatric Society	02 Bronx District Branch
32 Massachusetts Psychiatric Society	03 Brooklyn Psychiatric Society Inc.
37 Ontario District Branch	05 Genesee Valley Psychiatric Association
39 Quebec & Eastern Canada District Branch	24 Mid-Hudson Psychiatric Society
41 Rhode Island Psychiatric Society	25 Greater Long Island Psychiatric Society
62 Maine Association of Psychiatric Physicians	27 New York County District Branch
66 Vermont Psychiatric Association	28 New York State Capital District Branch
68 New Hampshire Psychiatric Society	40 Queens County Psychiatric Society
Area 3	49 Psychiatric Society of Westchester County Inc.
08 Psychiatric Society of Delaware	51 Western New York Psychiatric Society
20 Maryland Psychiatric Society Inc.	55 West Hudson Psychiatric Society
26 New Jersey Psychiatric Association	56 Central New York District Branch
38 Pennsylvania Psychiatric Society	59 Northern New York District Branch
48 Washington Psychiatric Society	Area 4
Area 5	09 Missouri Psychiatric Association
01 Arkansas Psychiatric Society	13 Illinois Psychiatric Society
10 Florida Psychiatric Society	14 Indiana Psychiatric Society
11 Georgia Psychiatric Physicians Association Inc.	16 Iowa Psychiatric Society
18 Kentucky Psychiatric Medical Association	17 Kansas Psychiatric Society
19 Louisiana Psychiatric Medical Association	21 Michigan Psychiatric Society
23 Mississippi Psychiatric Association Inc.	22 Minnesota Psychiatric Society
29 North Carolina Psychiatric Association	34 Nebraska Psychiatric Society
36 Oklahoma Psychiatric Physicians Association	35 Ohio Psychiatric Physicians Association
42 South Carolina Psychiatric Association	52 Wisconsin Psychiatric Association
45 Tennessee Psychiatric Association	63 North Dakota Psychiatric Society
46 Texas Society of Psychiatric Physicians	72 South Dakota Psychiatric Association
47 Psychiatric Society of Virginia Inc.	Area 6
54 West Virginia Psychiatric Association	04 Central California Psychiatric Society
60 Alabama Psychiatric Physicians Association	30 Northern California Psychiatric Society
70 Puerto Rico Psychiatric Society	43 Southern California Psychiatric Society
77 Society of Uniformed Services Psychiatrists	64 San Diego Psychiatric Society
Area 7	76 Orange County Psychiatric Society
06 Colorado Psychiatric Society	
12 Hawaii Psychiatric Medical Association	
15 Idaho Psychiatric Association	
33 Washington State Psychiatric Association	
53 Western Canada District Branch	
57 Arizona Psychiatric Society	
58 Oregon Psychiatric Association	
61 Utah Psychiatric Association	
67 Psychiatric Medical Association of New Mexico	
71 Alaska Psychiatric Association	
73 Montana Psychiatric Association	
74 Nevada Psychiatric Association	
75 Wyoming Association of Psychiatric Physicians	

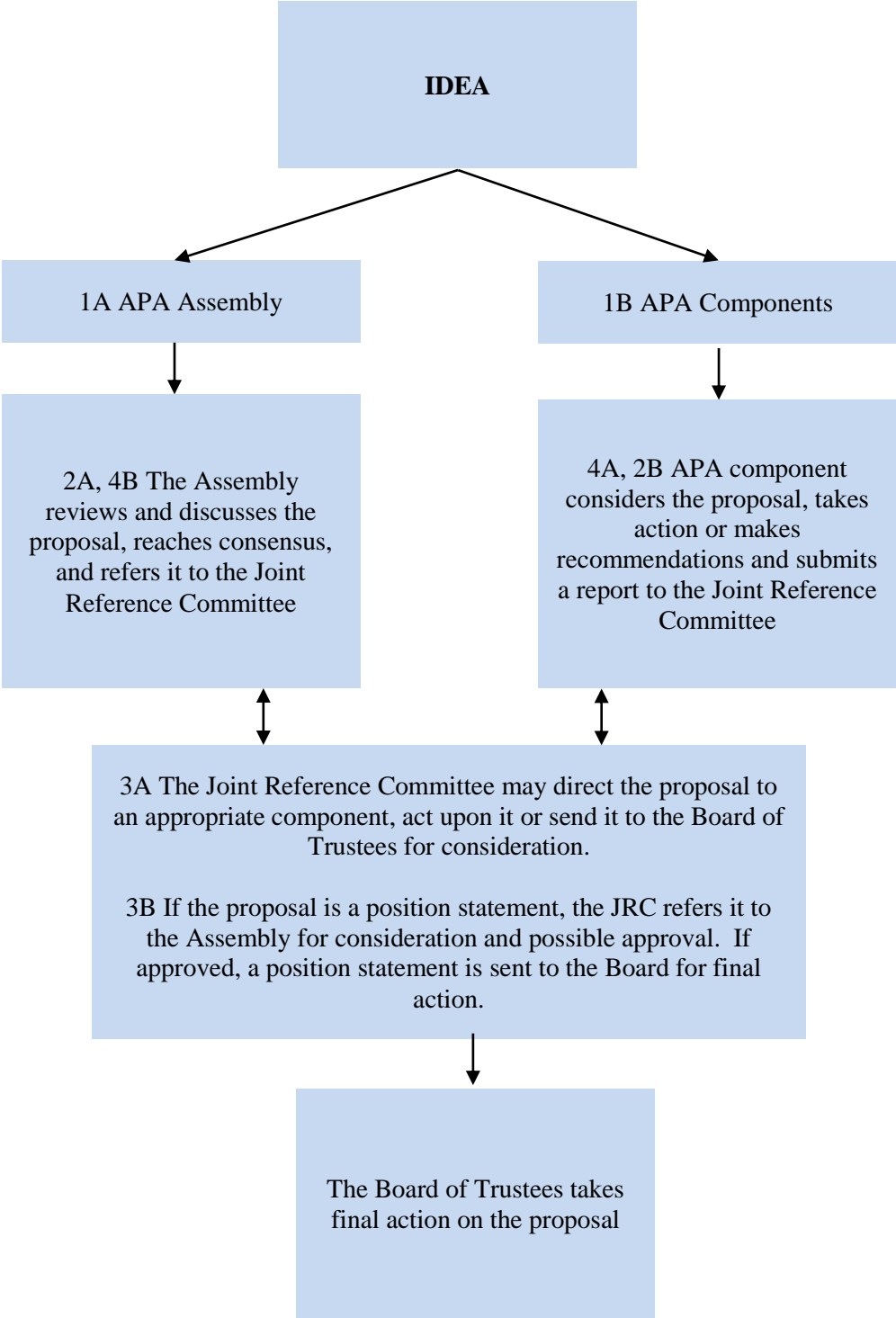
#### 4. Ad Hoc Committees

Ad Hoc Committees of the Board are created by the President, with the approval of the Board, to study specific, and usually time limited, issues of immediate concern. They are disbanded automatically if either their task is completed or at the June meeting of the Board, unless specifically continued.



# Section 5: Creating APA Policy

## A. How an Idea Can Become Policy



## B. How to Submit an Action Paper

[www.psychiatry.org/network/assembly/action-paper-central](http://www.psychiatry.org/network/assembly/action-paper-central) (Member log-in required)

An action paper is a vehicle by which the APA Assembly considers and adopts new policies, positions and procedures. An action paper is a written document drafted by a member or members of the Assembly, representing the views, opinions or ideas of the author or authors. Action papers can address a variety of topics, such as APA governance and membership issues, positions on societal issues or current events, academic endeavors, issues affecting the practice of psychiatry in general, and improving patient care, among others. Please remember that this is not an all-inclusive list and you should not feel limited to the specific subjects listed.

### Identify a Topic

The first step is to identify an idea or topic that you determine is relevant and important to the APA and the practice of psychiatry and ideally, something you feel passionately about. After you have outlined the basic concept, it is advisable to discuss it with colleagues or other senior members of the APA or your District Branch. This helps you obtain additional advice, recommendations and suggestions on your topic and also verify that this issue has not already been addressed in the past. It may be helpful to look up past actions, using your Member login, on [AITS: Action Item Tracking System](#) (Member log-in required).

Endeavor to limit your paper's topic to one clear goal or issue. A well-written action paper should be as cogent and succinct as possible.

Once you have formulated a coherent idea, you must contact your RFM Assembly Representative, i.e. a member of the Assembly Committee of Resident-Fellows (ACORF). All action papers must be authored or co-authored by an Assembly member in order to be eligible for submission. If you are not an Assembly member, you will need to identify an Assembly member who is willing to serve as co-author for your paper.

### Organization & Submission

All action papers must follow a specific format designated by the APA. They must include the following: Title, Whereas (statements listing reason for action), Be it Resolved (a statement of what action the APA should take and who should carry it out), Author(s), Estimated Cost, Estimated Savings, Estimated Revenue Generated, Endorsed By, Keywords, and APA Strategic Goal.

In addition, make sure you are aware of the action paper submission deadline for the next Assembly meeting and endeavor to submit your paper on time. Late action papers may not be accepted and may be postponed until a subsequent Assembly meeting.

It is advisable to garner support for your action paper prior to the upcoming Assembly meeting by presenting it to your District Branch or Area Council for their endorsement. If the action paper is endorsed by your District Branch or Area Council, they should be included in the Endorsed By section of the paper.

At the Assembly meeting, take the opportunity to speak with other Assembly members and advocate for your paper. Let people know why your paper is important and useful.

### Review & Approval Process

All action papers submitted to the Assembly are first reviewed by the Rules Committee. The Rules Committee may decide to place the action paper on the Consent Calendar for approval without discussion or debate. Typically, action papers placed on the Consent Calendar are seen as non-controversial and not requiring further review. Action papers placed on the Consent Calendar may be removed at the request of any Assembly member at the meeting.

The remaining papers are then referred to either one of several Reference Committees, comprised of Assembly members or to one or all of the seven Area Councils for review and recommendation. The Reference Committees and Area Councils will either endorse the paper, endorse the paper with changes, or decline to endorse the paper. The Reference Committee or Area Council assigned to review the action paper may suggest amendments or request that the author make changes for their review. Even if the Reference Committee or Area Council does not support the paper, the author still has the opportunity to have the action paper moved for consideration on the floor of the Assembly.

If the Reference Committee or Area Council approves your paper (with or without changes) or if the Reference Committee or Area Council rejects the paper, but it is successfully moved on the floor of the Assembly, it is then discussed by the members of the Assembly. After adequate discussion, the voting members of the Assembly vote on whether to approve the paper. Action papers can be tabled or postponed to another date by action of the Assembly. Approval of a paper requires an affirmative vote of a majority of the voting members in attendance. Finally, if an action paper passes, it is then referred to the Joint Reference Committee (JRC), which considers the paper and determines appropriate next steps.

For information on submitting an action paper including the action paper template, please visit [Action Paper Central](#) (Member log-in required).

# Section 6: Membership Value

## A. RFM Member Benefits

APA Resident-Fellow Members enjoy many benefits as members of the APA.

<b>Fellowships/Leadership Opportunities:</b>	<ul style="list-style-type: none"> <li>- <a href="#">Opportunities for funded public psychiatry, child &amp; adolescent, minority, leadership, Congressional, and research fellowships</a></li> <li>- <a href="#">Opportunities to become involved with advocacy</a> (for example, attending the annual Advocacy Day in Washington, DC - as a RFM, the APA will cover all of your expenses for this event)</li> </ul>
<b>Networking:</b>	<ul style="list-style-type: none"> <li>- Full access to the searchable online Member Directory for referrals or networking (Members-only section)</li> <li>- A <a href="#">Member-to-Member Listserv</a> (Member log-in required)</li> </ul>
<b>Educational Resources:</b>	<ul style="list-style-type: none"> <li>- Building a Career in Psychiatry guide, <a href="#">Part I: Medical School and Residency</a>” and <a href="#">Part II: Transitioning to Practice</a> (opens a PDF file, Member log-in required)</li> <li>- 25% discount on all <a href="#">American Psychiatric Publishing</a> publications (includes the DSM, as well as FOCUS and eFOCUS for boards review)</li> <li>- Free subscriptions to the <a href="#">American Journal of Psychiatry</a> and <a href="#">Psychiatric News</a>, both online and in print</li> <li>- Access to and opportunities to publish in the online <a href="#">Resident's Journal</a></li> <li>- <a href="#">Online Courses</a>, including Buprenorphine Training, Research Literacy</li> <li>- Discounts on <a href="#">Eprocrates</a> (Member log-in required)</li> <li>- Ability to sign up for <a href="#">drug/patient safety alerts</a></li> <li>- Resources for “<a href="#">Teaching How to Teach</a>” (opens a PDF file)</li> <li>- Free <a href="#">HIV psychiatry course</a> that will provide in-person, on-site education for any residency program</li> <li>- <a href="#">CME resources</a></li> </ul>
<b>Research:</b>	<ul style="list-style-type: none"> <li>- <a href="#">Directory</a> of Research Fellowship Opportunities</li> <li>- <a href="#">Resident Research Colloquium</a> and <a href="#">Poster Competition</a> at the Annual Meeting</li> <li>- <a href="#">Resident Research Award</a></li> </ul>
<b>Resources for Practice:</b>	<ul style="list-style-type: none"> <li>- <a href="#">Clinical Practice Guidelines</a> for various diagnoses and treatment options</li> <li>- Access to <a href="#">JobCentral</a>, which lists positions across the country (and can include moonlighting opportunities)</li> <li>- <a href="#">Patient Education</a> materials</li> <li>- Resources for setting up and <a href="#">starting a private practice</a></li> <li>- <a href="#">Practice Management Helpline</a> for issues with coding/billing</li> <li>- Access to <a href="#">Prescriber's Clinical Support System-Opioid Therapies</a>, an online collaboration between multiple addiction specialty groups that provides webinars, mentoring, a clinical support app, and virtual patients for practice encounters</li> <li>- Following graduation, access to an established <a href="#">Professional Liability Insurance Program</a></li> </ul>
<b>Additional Benefits:</b>	<ul style="list-style-type: none"> <li>- Discounted admission to the <a href="#">Annual Meeting</a> and other meetings, and a discount on the Annual Meeting <a href="#">OnDemand</a></li> <li>- A Resident Resource center for orientation/socializing/RFM-specific events at the Annual Meeting, as well as a specific resident track with resident/fellow-oriented presentations</li> <li>- Specific support resources in the event of <a href="#">Patient Suicide</a></li> <li>- <a href="#">Residency Survival Guide for starting out</a> (opens a PDF file)</li> <li>- <a href="#">Discounts</a> on home/auto insurance, credit card programs, financial planning, rental cars, magazines, legal services</li> </ul>

## B. Join APA as RFM

Resident-Fellow Members (RFM) are physicians who have been accepted into a psychiatric residency training program that is approved by the ACGME, RCPS(C), or AOA and remain enrolled therein. Residents enrolled in a one-year primary care training program to be followed by an approved psychiatric residency are eligible for Resident-Fellow Member status. **First-Year APA Dues are waived for Resident-Fellow Members. After the first year, Resident-Fellow Member annual national dues are only \$105/U.S. and \$65/Canada.**

**Automatic Advancement to General Member:** Resident-Fellow Members are automatically advanced to General Member (GM) status upon completion of psychiatry residency training. APA requires that members verify they meet the General Membership requirements by completing the [GM Verification Form](#). If a Resident-Fellow Member is continuing training in a fellowship program, the information must be reported to APA on the GM Verification Form or by email ([membership@psych.org](mailto:membership@psych.org)) so the member's status can be changed back to Resident-Fellow Member.

[Apply Online](#)

[Download Application](#)

## C. 100% Club for Residency Training Programs

[www.psychiatry.org/join-participate/becoming-a-member/100-club-for-residency-training-programs](http://www.psychiatry.org/join-participate/becoming-a-member/100-club-for-residency-training-programs)

The APA 100% Club was established to encourage residents throughout the United States and Canada to join the APA with fellow trainees in their programs. Many psychiatric residency programs come very close to making 100% Club each year, but fall a little short. In order to honor those programs for their efforts, the 100% Club has been expanded to three levels of Gold, Silver and Bronze, as well as the addition of a Platinum level, which will recognize programs that have been part of the 100% Club Gold level for the past five consecutive years. *See below for eligibility requirements, description and benefits for each level.* Email your general psychiatry resident roster at the start of the training year to Nancy Archey at [narchey@psych.org](mailto:narchey@psych.org) to verify memberships and maintain your 100% Club status.

### Level of Membership:

**Platinum Level:** Programs that have been part of 100% Club Gold Level for the past 5 consecutive years.

**Gold Level:** Programs that have 100% of their residents as APA members.

**Silver Level:** Programs that have 90-99% of their residents as APA members.

**Bronze Level:** Programs that have 80-89% of their residents as APA members.

### Benefits:

Level	APPI Gift Card	Gift per Resident	Plaque	Certificate	Psych News
Platinum	\$200	X	X	X	X
Gold	\$100	X		X	X
Silver	X			X	X
Bronze				X	X

[100% Club Member List](#): Residency Programs that have obtained 100% Club Status

## D. Chief Resident Leadership Conference

[www.psychiatry.org/residents/fellowships-awards/chief-resident-leadership-conference](http://www.psychiatry.org/residents/fellowships-awards/chief-resident-leadership-conference)

Many leaders in psychiatry, indeed medicine, started their career as chief residents. These are individuals selected for their natural ability to serve in this demanding role. However, most chief residents begin their tenure with only the example of their predecessors to guide them. Very few have any formal training in organizational issues, teaching, or leadership, and many have no preparation at all for their new responsibilities. This conference will train and guide the participants in their current role as "chief" and future leaders in the field. Each ACGME-accredited general psychiatry residency training program and child psychiatry fellowship can send at least one chief resident to attend this conference. The conference is held in conjunction with APA's Annual Meeting every May. Over 120 incoming chief residents from across the United States and Canada attend this one-day, experiential leadership course.

### Goals and Objective:

- Enrich the participants' command of their personal leadership style as they lead teams and groups of colleagues to build consensus between the program leadership and residents
- Train the participants as they deal with administrators and faculty
- Meet and network with leaders in psychiatry
- Delve deeper in particular career tracks through breakout sessions that are hands-on and interactive in style
- Increase resident leaders' participation in areas of medicine where psychiatry is not normally represented

### C. Acronym Glossary

<b>APA-RELATED</b>	
ACORF	Assembly Committee of Residents and Fellows
APAA	American Psychiatric Association Alliance
APAPAC	American Psychiatric Association Political Action Committee
APF	American Psychiatric Foundation
APP	American Psychiatric Publishing
AMA-RFS	American Medical Association Resident Fellow Section
ASM	Assembly
BOT	Board of Trustees
ECP	Early Career Psychiatrists
GM	General Member
JRC	Joint Reference Committee
MFP	Minority Fellowship Program
M/UR	Minority/Under-Represented
RFM	Resident-Fellow Member
RFMT	Resident-Fellow Member Trustee
RFMTE	Resident-Fellow Member Trustee-Elect
PsychSIGN	Psychiatry Student Interest Group Network
SAMHSA	Substance Abuse and Mental Health Services Administration

<b>ACCREDITATION/EDUCATION RELATED GROUPS</b>	
AAMC/ CAS	Association of American Medical Colleges/Council of Academic Societies
AACDP	American Association for Chairs of Departments of Psychiatry
AADPRT	American Association of Directors of Psychiatry Residency Training
AAP	Association for Academic Psychiatry
ABPN	American Board for Psychiatry and Neurology, Inc.
ACCME	Accreditation Council for Continuing Medical Education
ACGME	Accreditation Council for Graduate Medical Education
ADMSEP	Association of Directors of Medical Student Education in Psychiatry
CMSS	Council of Medical Specialty Societies
GAP	Group for the Advancement of Psychiatry
JCAHO	Joint Commission on Accreditation of Healthcare Organizations
LCME	Liaison Committee for Medical Education
NCQA	National Committee for Quality Assurance
RRC	Residency Review Committee
WPA	World Psychiatric Association

<b>SUBSPECIALTY AND ALLIED GROUPS</b>	
APM	Academy of Psychosomatic Medicine
AAAP	American Academy of Addiction Psychiatry
AACAP	American Academy of Child & Adolescent Psychiatry
AACP	American Academy of Clinical Psychiatrists
AACP	American Association of Community Psychiatrists
AAPL	American Academy of Psychiatry & Law
AAPDP	American Academy of Psychoanalysis and Dynamic Psychiatry
AAEP	American Association for Emergency Psychiatry
AAGP	American Association of Geriatric Psychiatry
AAPPP	American Association of Private Practice Psychiatrists
AAPA	American Association of Psychiatric Administrators
AASP	American Association of Social Psychiatry
AGPA	American Group Psychotherapy Association
APA	American Psychoanalytic Association
ASAP	American Society for Adolescent Psychiatry
ASHP	American Society of Hispanic Psychiatry
ACT	Association for Convulsive Therapy
ACAP	Association of Chinese American Psychiatrists

AFP	Association of Family Psychiatrists
AGLP	Association of Gay and Lesbian Psychiatrists
AKAP	Association of Korean American Psychiatrists
AWP	Association for Women Psychiatrists
BPA	Black Psychiatrists of America
HAPA	Haitian American Psychiatric Association
IAPA	Indo-American Psychiatric Association
PPA	Philippine Psychiatrists in America
SSPC	Society for the Study of Psychiatry and Culture